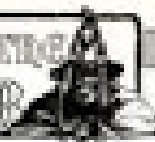


THE WINDOW OF LE MANOIR

# THE FERGANACE OF THE ICEBERGMASTER



## THE RECONSTRUCTION OF A BUILDING

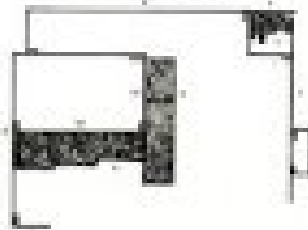
The building shown in the plan is a simple structure, a rectangular block of masonry with a gabled roof. It is situated on a small island in the middle of a large body of water. The plan shows the building's footprint, including the walls, the roof, and the surrounding area. The building is oriented with its long side parallel to the shore.

The building is a simple structure, a rectangular block of masonry with a gabled roof. It is situated on a small island in the middle of a large body of water. The plan shows the building's footprint, including the walls, the roof, and the surrounding area. The building is oriented with its long side parallel to the shore.

The building is a simple structure, a rectangular block of masonry with a gabled roof. It is situated on a small island in the middle of a large body of water. The plan shows the building's footprint, including the walls, the roof, and the surrounding area. The building is oriented with its long side parallel to the shore.

The building is a simple structure, a rectangular block of masonry with a gabled roof. It is situated on a small island in the middle of a large body of water. The plan shows the building's footprint, including the walls, the roof, and the surrounding area. The building is oriented with its long side parallel to the shore.

The building is a simple structure, a rectangular block of masonry with a gabled roof. It is situated on a small island in the middle of a large body of water. The plan shows the building's footprint, including the walls, the roof, and the surrounding area. The building is oriented with its long side parallel to the shore.



The building is a simple structure, a rectangular block of masonry with a gabled roof. It is situated on a small island in the middle of a large body of water. The plan shows the building's footprint, including the walls, the roof, and the surrounding area. The building is oriented with its long side parallel to the shore.

The building is a simple structure, a rectangular block of masonry with a gabled roof. It is situated on a small island in the middle of a large body of water. The plan shows the building's footprint, including the walls, the roof, and the surrounding area. The building is oriented with its long side parallel to the shore.

The building is a simple structure, a rectangular block of masonry with a gabled roof. It is situated on a small island in the middle of a large body of water. The plan shows the building's footprint, including the walls, the roof, and the surrounding area. The building is oriented with its long side parallel to the shore.

